

1 需要安装的软件

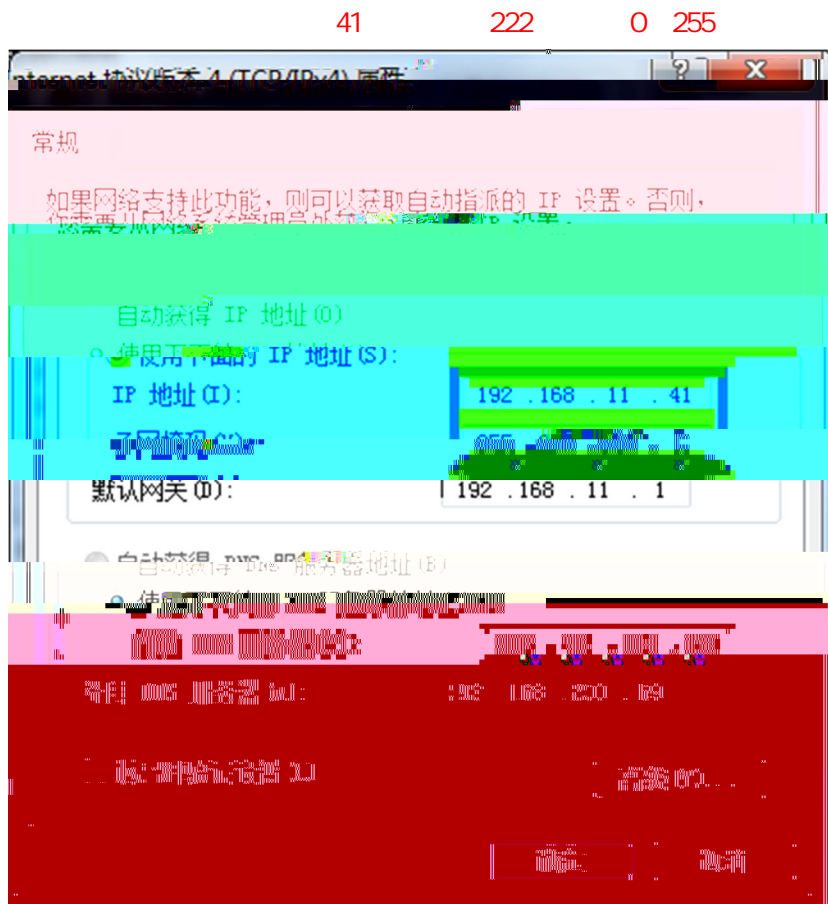
- 1.1 X_Builder XBuilderFor
- 1.2 VSPE
- 1.3 Modbus Poll



2 需要用到的程序

- 21 PLC MC200-WEN \ \MC200 PLC
- 22 MC200-WEN \ \
- 23 MC200-WEN \ \MODBUS PULL Modbus Pull

3 测试环境设置（电脑本地链接属性设置）



4 测试步骤

4.1

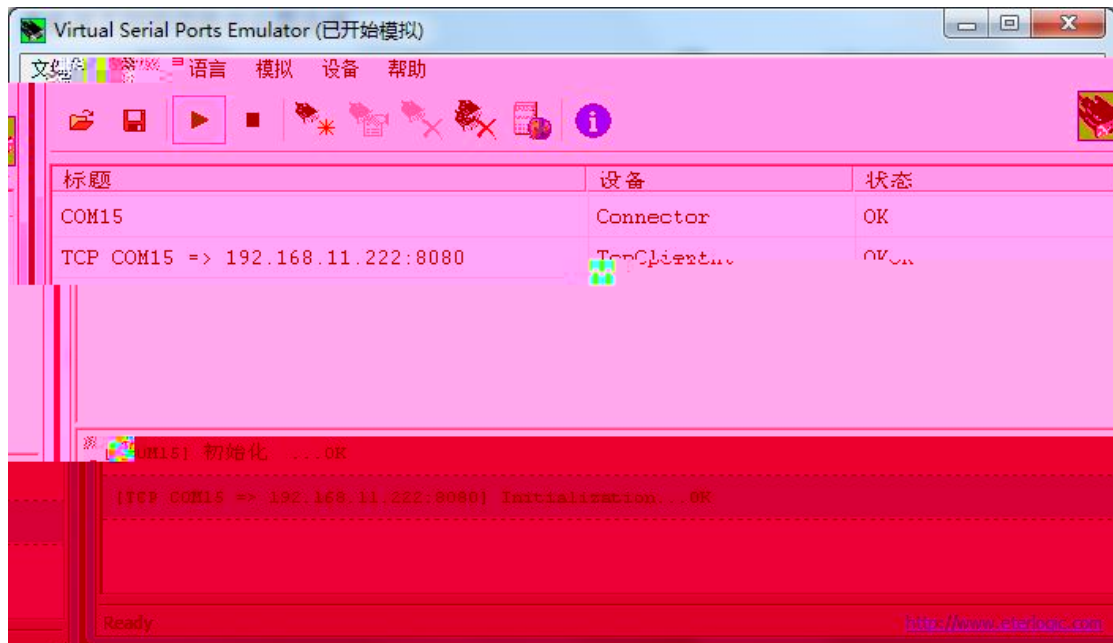
4.2 WEN WEN Ethernet

4.3 PLC 1

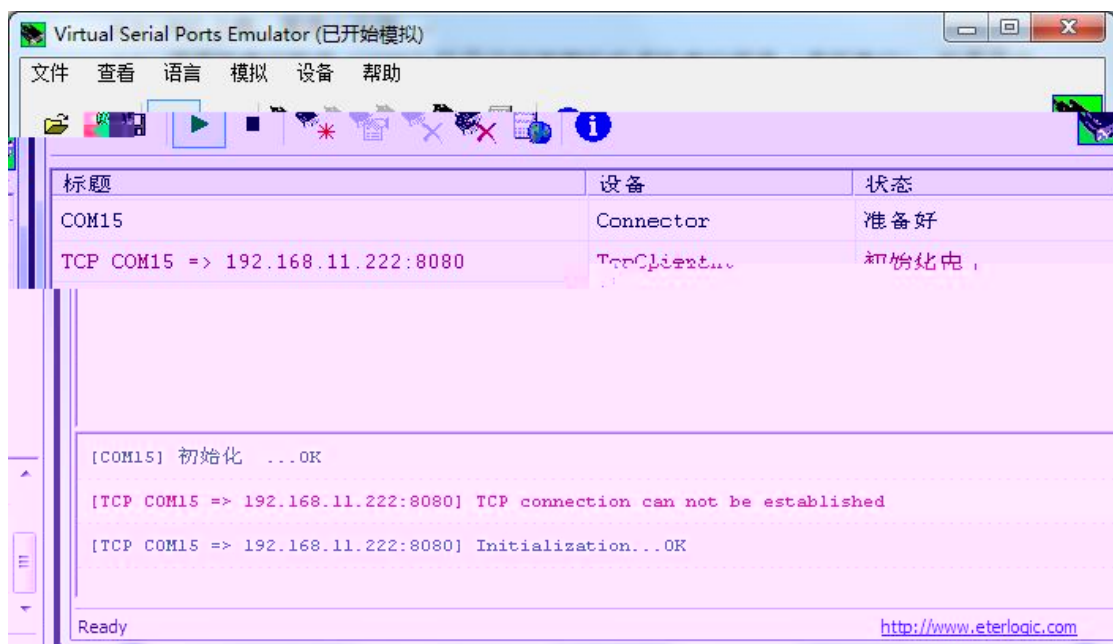
4.4 VSPE MC200-WEN \

OK 4.4.1

4.4.2



4.4.1



4.4.2

4.4.1

4.4.2

PLC

1

4.4.3

6s

4.4.2

4.4.4

4.5

4.5.1

Modbus poll

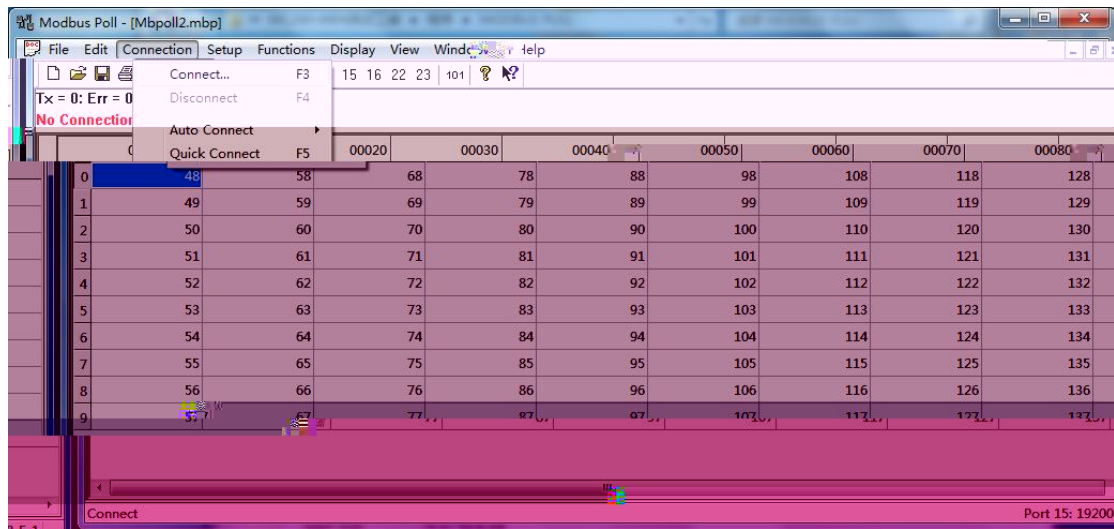
MC200-WEN

\ \MODBUS PULL

4.5.2

"connect..."

4.5.2.1

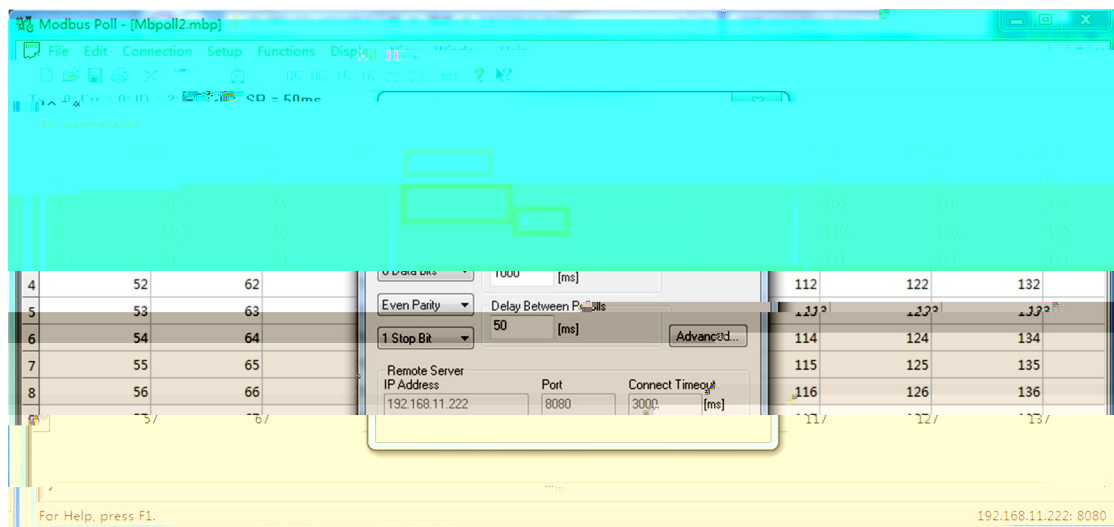


4.5.2.1

4.5.3

"OK"

4.5.3.1



4.5.3.1

4.5.4

PLC

PLC

4.5.4.1

	00000	00010	00020	00030	00040	00050	00060	00070	00080
0	80	90	100	110	120	130	140	150	160
1	81	91	101	111	121	131	141	151	161
2	82	92	102	112	122	132	142	152	162
3	83	93	103	113	123	133	143	153	163
4	84	94	104	114	124	134	144	154	164
5	85	95	105	115	125	135	145	155	165
6	86	96	106	116	126	136	146	156	166
7	87	97	107	117	127	137	147	157	167
8	88	98	108	118	128	138	148	158	168
9	89	99	109	119	129	139	149	159	169

4.5.4.1

4.5.5

4.5.5.1

4.4

	00000	00010	00020	00030	00040	00050	00060	00070
99	20	29	39	49	59	69	79	89
100	21	30	40	50	60	70	80	90
101	22	31	41	51	61	71	81	91
102	23	32	42	52	62	72	82	92
103	24	33	43	53	63	73	83	93
104	25	34	44	54	64	74	84	94
105	26	35	45	55	65	75	85	95
106	27	36	46	56	66	76	86	96
107	28	37	47	57	67	77	87	97
108	29	38	48	58	68	78	88	98

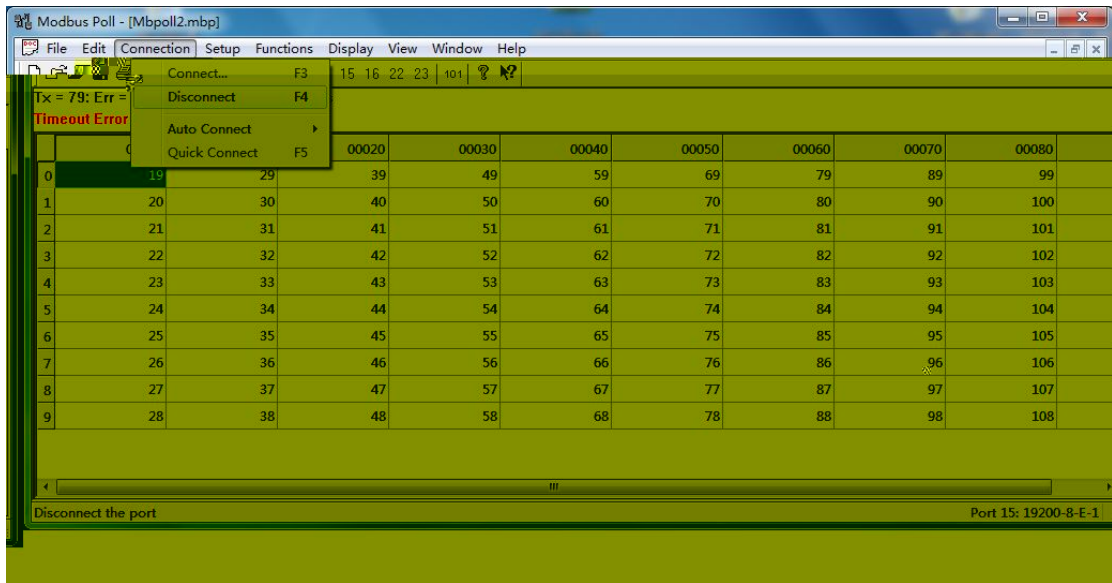
4.5.5.1

4.5.6

4.5.6.1

"Disconnect"

4.5.2 4.5.4



4.5.61